

Name \_\_\_\_\_  
 Hour \_\_\_\_\_

# Circulatory System

## A. Overview of Circulation

### Color and label:

1. ○ pulmonary arteries (blue)
2. ○ pulmonary veins (red)
3. ○ systemic arteries (red)
4. ○ systemic veins (blue)
5. ○ capillaries (purple)
6. ○ right atrium (blue)
7. ○ right ventricle (blue)
8. ○ left atrium (red)
9. ○ left ventricle (red)

### Label:

10. tricuspid valve
11. mitral valve
12. lung

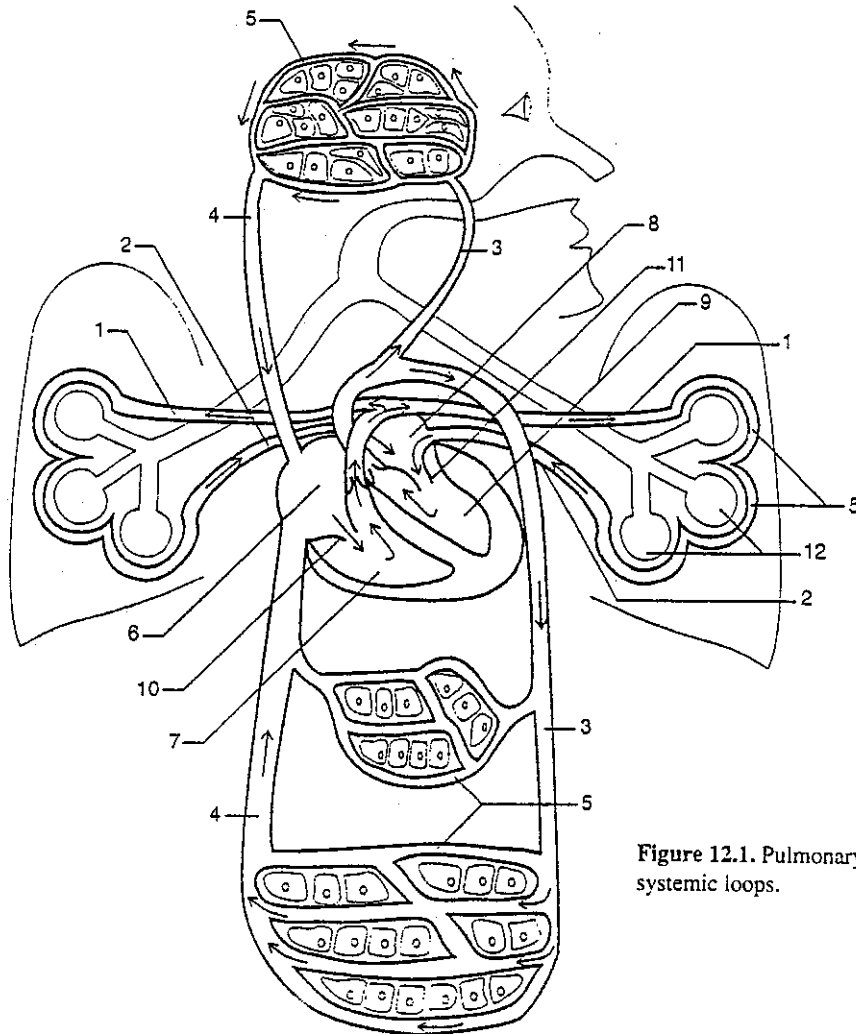


Figure 12.1. Pulmonary and systemic loops.

### Exercise 12.1:

- \_\_\_\_\_ 1. The vessels carrying blood to and from the lungs are called the \_\_\_\_\_ loop of the circulatory system.
- \_\_\_\_\_ 2. The vessels carrying blood to and from tissues of the body (other than the lungs) are called the \_\_\_\_\_ loop of the circulatory system.
- \_\_\_\_\_ 3. In the capillaries of the lungs the blood is exposed to \_\_\_\_\_.
- \_\_\_\_\_ 4. Usually blood draining from capillaries passes through \_\_\_\_\_ directly back to the \_\_\_\_\_.
- \_\_\_\_\_ 5. The chambers of the heart that receive blood from the veins are the right and left \_\_\_\_\_.
  - a. In the systemic loop, blood drains back to the heart from \_\_\_\_\_ into the \_\_\_\_\_.
  - b. In the pulmonary loop, blood drains back to the heart from the \_\_\_\_\_ into the \_\_\_\_\_.
- \_\_\_\_\_ 6. Blood passes from the right atrium through the \_\_\_\_\_ valve into the \_\_\_\_\_.
- \_\_\_\_\_ 7. Blood passes from the left atrium through the \_\_\_\_\_ valve into the \_\_\_\_\_.
- \_\_\_\_\_ 8. The right ventricle pumps blood into the \_\_\_\_\_ loop.
- \_\_\_\_\_ 9. The left ventricle pumps blood into the \_\_\_\_\_ loop.