

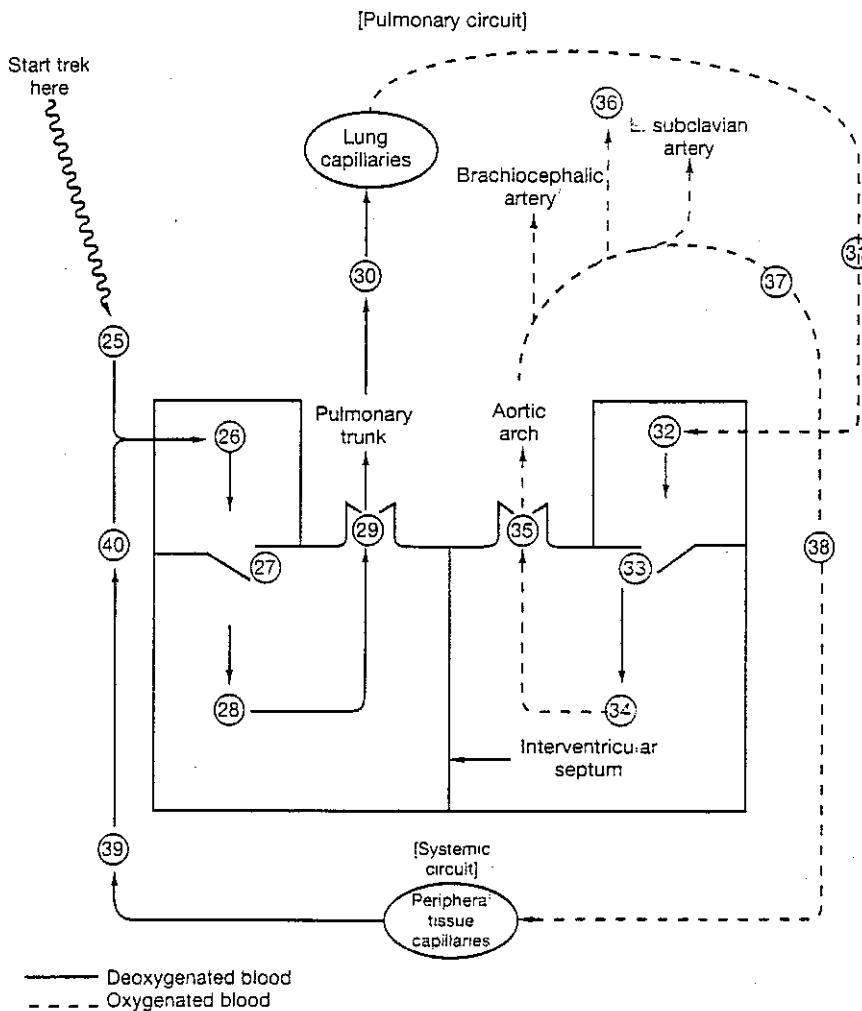
**Body Trek:**

Using the terms below, fill in the blanks to complete a trek through the heart and peripheral blood vessels.

- |                            |                          |                 |
|----------------------------|--------------------------|-----------------|
| aortic semi-lunar valve    | L. common carotid artery | pulmonary veins |
| pulmonary semi-lunar valve | systemic arteries        | right atrium    |
| inferior vena cava         | bicuspid valve           | left ventricle  |
| left atrium                | pulmonary arteries       | systemic veins  |
| tricuspid valve            | superior vena cava       | aorta           |
|                            |                          | right ventricle |

Robo's instructions: On this trek you will use the "heart map" to follow a drop of blood as it goes through the heart and peripheral blood vessels. Identify each structure at the sequential, circled, numbered locations — 25 through 40.

Ventral view of heart—  
path of circulation—"Heart Map"



- |          |          |          |
|----------|----------|----------|
| 25 _____ | 31 _____ | 36 _____ |
| 26 _____ | 32 _____ | 37 _____ |
| 27 _____ | 33 _____ | 38 _____ |
| 28 _____ | 34 _____ | 39 _____ |
| 29 _____ | 35 _____ | 40 _____ |
| 30 _____ |          |          |